



## THE LACHLAN

4 bed | 2 bath | media | alfresco  
34 squares

The Lachlan is a versatile family home designed to suit a standard house block.

This four bedroom home combines everything a modern family desires with separate lounge, combined meals/living, open-plan kitchen with large walk-in-pantry and breakfast bar, media room, private master bedroom with ensuite featuring a double shower with walk-in robe, and a large alfresco area under the main roof for outdoor entertaining.

A 30 degree roof pitch and raked ceilings throughout the living areas give this home a sophisticated edge.

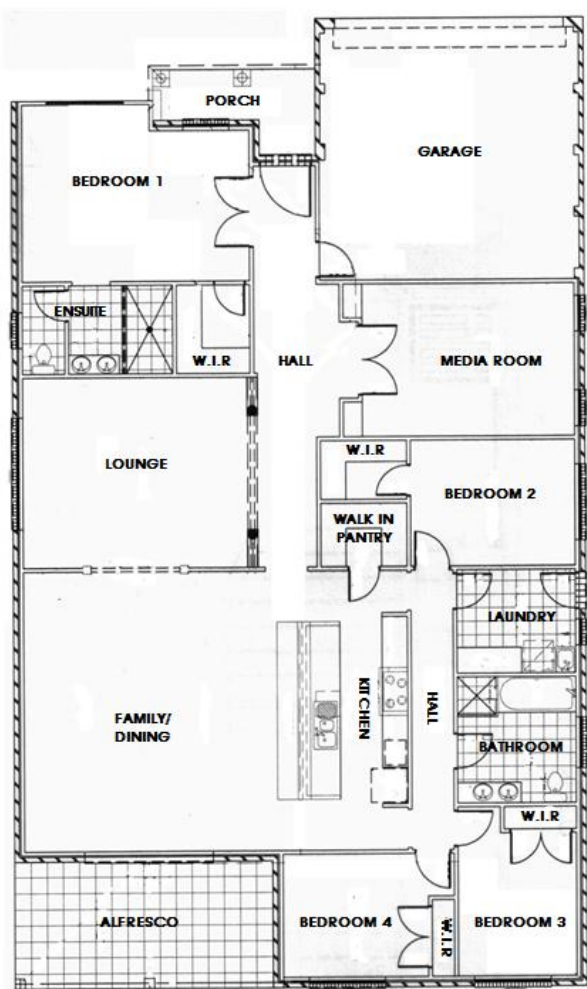
The perfect family entertainer!

### AREA

Main	229.8	m <sup>2</sup>
Garage	37.8	m <sup>2</sup>
Porch	5.88	m <sup>2</sup>
Alfresco	18	m <sup>2</sup>

### DIMENSIONS

Width	13.5	m
Depth	22.9	m



### COPYRIGHT

This plan is the property of Riverleigh Homes and may not be copied in whole or in part without the permission of the company.  
Kosub Constructions Pty Ltd T/As Riverleigh Homes  
ABN 70 121 157 417 Builders Licence # 188275c